



Manoharbhair Shikshan Prasarak Mandal Armori's

**MAHATMA GANDHI ARTS, SCIENCE &
LATE NASARUDDINBHAI PANJWANI COMMERCE
COLLEGE, ARMORI**

Dist. Gadchiroli (Maharashtra) 441 208

Affiliated to Gondwana University, Gadchiroli.

Re-accredited by NAAC 'A' with 3.24 CGPA

ANNUAL QUALITY ASSURANCE REPORT

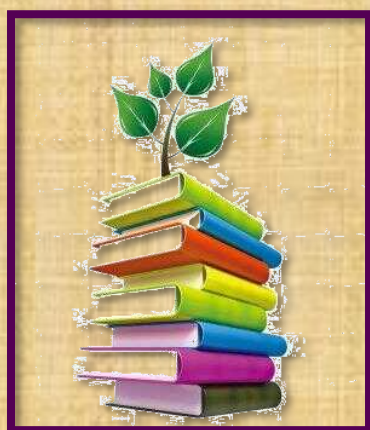
AQAR : 2021-2022

CRITERION – I

CURRICULAR ASPECTS

METRIC NO: ~ 1.1.3.

METRIC NAME: ~ Teachers of the Institution participate in the following activities related to curriculum development and assessment of the affiliating University and/are represented on the following academic bodies during the last completed academic calendar.



Web: - mgcollegearmori.ac.in
e-mail: - mgcollege.armori@gmail.com
Phone: - 07137-266558

1.1.3 Participation of teachers in various bodies of the Universities/Autonomous Colleges/ Other Colleges, such as BoS and Academic Council during the year.

Details of Participation of Teachers in various bodies/activities


Academic Year 2021-2022		
Year	Name of teacher participated	Name of the body in which full time teacher participated
2021-2022	Dr. L. H. Khalsa	1. Academic council/BoS of Affiliating university 2. Setting of question papers for UG/PG programs 3. Design and Development of Curriculum for Add on/ certificate/ Diploma Courses 4. Assessment /evaluation process of the affiliating University
2021-2022	Dr. Ramesh. M Thombre	1. Academic council/BoS of Affiliating university 2. Setting of question papers for UG/PG programs 3. Design and Development of Curriculum for Add on/ certificate/ Diploma Courses 4. Assessment /evaluation process of the affiliating University
2021-2022	Dr. Chandrakant. P. Dorlikar	1. Academic council/BoS of Affiliating university 2. Setting of question papers for UG/PG programs 3. Design and Development of Curriculum for Add on/ certificate/ Diploma Courses 4. Assessment /evaluation process of the affiliating University
2021-2022	Prof. Mohanlal. K. Ramteke	1. Setting of question papers for UG/PG programs 2. Design and Development of Curriculum for Add on/ certificate/ Diploma Courses 3. Assessment /evaluation process of the affiliating University
2021-2022	Prof. Shashikant. B. Gedam	1. Setting of question papers for UG/PG programs 2. Design and Development of Curriculum for Add on/ certificate/ Diploma Courses 3. Assessment /evaluation process of the affiliating University

2021-2022	Prof. Dilip M. Ghonmode	1. Setting of question papers for UG/PG programs 2. Assessment /evaluation process of the affiliating University
2021-2022	Prof. Ku. Seema. T. Nagdeve	1. Setting of question papers for UG/PG programs 2. Design and Development of Curriculum for Add on/ certificate/ Diploma Courses 3. Assessment /evaluation process of the affiliating University
2021-2022	Prof. Dnyaneshwar. V. Thakare	1. Setting of question papers for UG/PG programs 2. Design and Development of Curriculum for Add on/ certificate/ Diploma Courses 3. Assessment /evaluation process of the affiliating University
2021-2022	Prof. Sattendra. M. Sontakke	1. Setting of question papers for UG/PG programs 2. Design and Development of Curriculum for Add on/ certificate/ Diploma Courses 3. Assessment /evaluation process of the affiliating University
2021-2022	Prof. Nomesh. N. Meshram	1. Setting of question papers for UG/PG programs 2. Design and Development of Curriculum for Add on/ certificate/ Diploma Courses 3. Assessment /evaluation process of the affiliating University
2021-2022	Dr. Chhagan. D. Mungmode	1. Setting of question papers for UG/PG programs 2. Design and Development of Curriculum for Add on/ certificate/ Diploma Courses 3. Assessment /evaluation process of the affiliating University
2021-2022	Prof. Parag. S.Meshram	1. Setting of question papers for UG/PG programs 2. Design and Development of Curriculum for Add on/ certificate/ Diploma Courses 3. Assessment /evaluation process of the affiliating University
2021-2022	Dr. Vijay P. Gorde	1. Academic council/BoS of Affiliating university 2. Setting of question papers for UG/PG programs 3. Design and Development of Curriculum for Add on/ certificate/ Diploma Courses 4. Assessment /evaluation process of the affiliating University

2021-2022	Dr. Vasanta I. Kahalkar	1. Setting of question papers for UG/PG programs 2. Design and Development of Curriculum for Add on/ certificate/ Diploma Courses 3. Assessment /evaluation process of the affiliating University
2021-2022	Dr. Manoj. M. Thaore	1. Academic council/BoS of Affiliating university 2. Setting of question papers for UG/PG programs 3. Design and Development of Curriculum for Add on/ certificate/ Diploma Courses 4. Assessment /evaluation process of the affiliating University
2021-2022	Prof. Priyadarshan. S. Ganvir	1. Setting of question papers for UG/PG programs 2. Assessment /evaluation process of the affiliating University
2021-2022	Dr. Vijay. H. Raiwatkar	1. Setting of question papers for UG/PG programs 2. Assessment /evaluation process of the affiliating University
2021-2022	Dr. Gajendra. M. Kadhav	1. Setting of question papers for UG/PG programs 2. Design and Development of Curriculum for Add on/ certificate/ Diploma Courses 3. Assessment /evaluation process of the affiliating University
2021-2022	Prof. Ku. Sneha. Mohurle	1. Setting of question papers for UG/PG programs 2. Design and Development of Curriculum for Add on/ certificate/ Diploma Courses 3. Assessment /evaluation process of the affiliating University
2021-2022	Prof. Gajanan. W.Borkar	1. Setting of question papers for UG/PG programs 2. Design and Development of Curriculum for Add on/ certificate/ Diploma Courses 3. Assessment /evaluation process of the affiliating University
2021-2022	Prof. Anil. P. Raut	1. Setting of question papers for UG/PG programs 2. Design and Development of Curriculum for Add on/ certificate/ Diploma Courses 3. Assessment /evaluation process of the affiliating University
2021-2022	Prof. Vaibhav. P. Padole	1. Setting of question papers for UG/PG programs

		2. Design and Development of Curriculum for Add on/ certificate/ Diploma Courses 3. Assessment /evaluation process of the affiliating University
2021-2022	Dr. Naresh. D. Bansod	1. Setting of question papers for UG/PG programs 2. Assessment /evaluation process of the affiliating University
2021-2022	Dr. Satish. S. Kola	1. Setting of question papers for UG/PG programs 2. Assessment /evaluation process of the affiliating University
2021-2022	Dr. Sunanda. B. Kumre	1. Setting of question papers for UG/PG programs 2. Design and Development of Curriculum for Add on/ certificate/ Diploma Courses 3. Assessment /evaluation process of the affiliating University
2021-2022	Prof. Nikhil A. Borode	1. Setting of question papers for UG/PG programs 2. Assessment /evaluation process of the affiliating University




 Principal
 Mahatma Gandhi Arts,
 Science & Late
 N P Commerce College,
 Armori, Dist - Gadchiroli